

# MONTHLY MEMBERSHIP PROGRESS REPORT

LOCATION INDIA

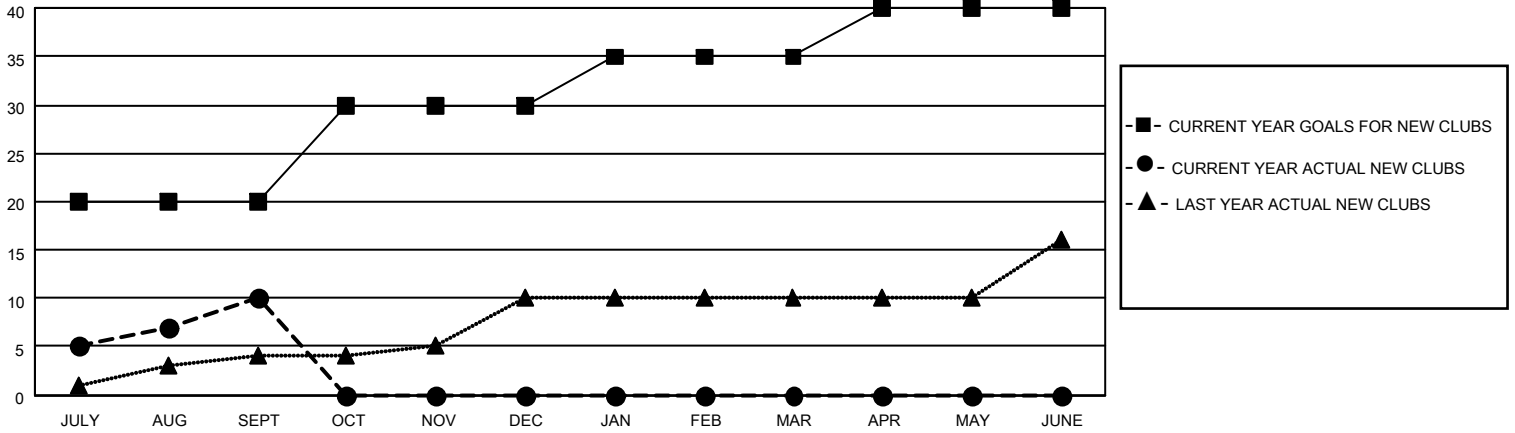
District 317 E

Results as of: 9/30/2021

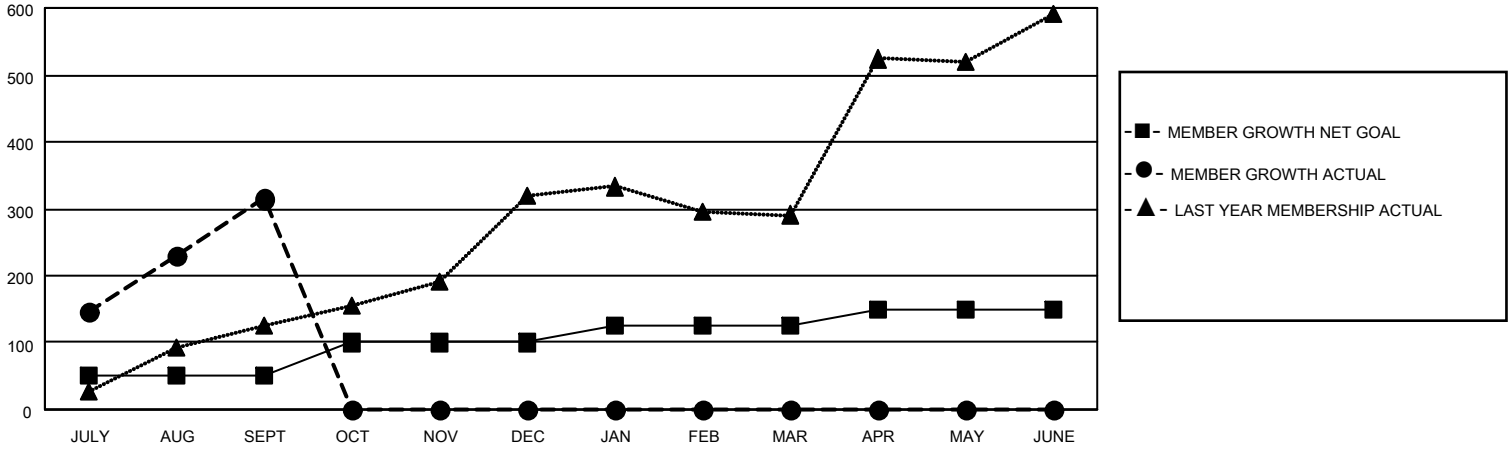
Clubs			
RESULTS FOR 2021-2022			
QUARTER	NEW CLUB GOAL	NEW CLUBS	DROPPED CLUBS
JULY/AUG/SEPT	20	10	0
OCT/NOV/DEC	10	0	0
JAN/FEB/MAR	5	0	0
APR/MAY/JUNE	5	0	0

Members			
RESULTS FOR 2021-2022			
QUARTER	MEMBER GROWTH NET GOAL	MEMBER GROWTH ACTUAL	DROPPED MEMBERS ACTUAL (including transfers)
JULY/AUG/SEPT	50	351	33
OCT/NOV/DEC	50	0	0
JAN/FEB/MAR	25	0	0
APR/MAY/JUNE	25	0	0

**GOALS AND ACTUAL NEW CLUBS CUMULATIVE**



**GOALS AND ACTUAL MEMBERS CUMULATIVE**



**DROPPED CLUBS: 0**

**30 CLUBS OF 75 ADDED 1 OR MORE NEW MEMBERS**

**GENDER DISTRIBUTION**

MALE	1,976 (73.27%)
FEMALE	721 (26.73%)
NON BINARY	0 (0.00%)
PREFER NOT TO ANSWER	0 (0.00%)

**DROPPED MEMBERS**

[CLICK HERE FOR CUMULATIVE MEMBERSHIP DATA](#)

DECEASED	4
CLUB CANCELLED	0
OTHER	29
<b>TOTAL</b>	<b>33</b>

TOTAL FAMILY UNIT MEMBERS 854

FAMILY MEMBERS PAYING HALF DUES 506